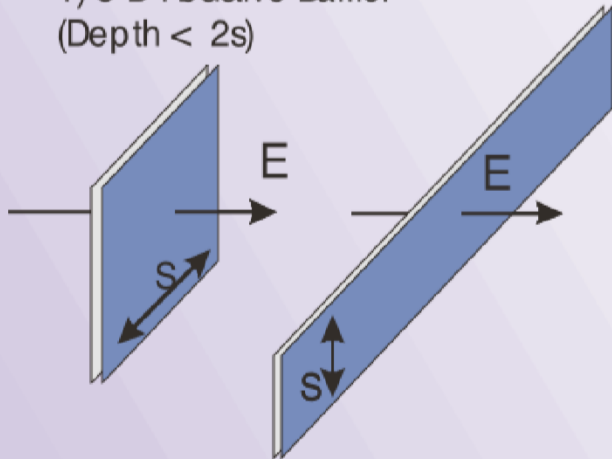
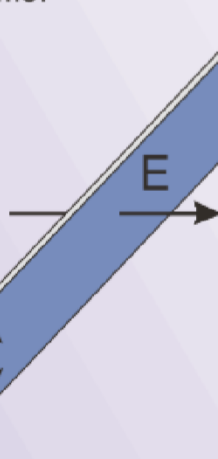


# ISR Target Sensitivity Guidelines

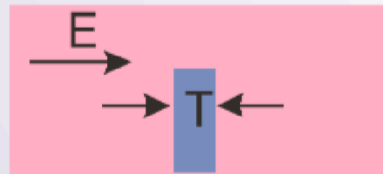
1) 3-D Resistive Barrier  
(Depth < 2s)



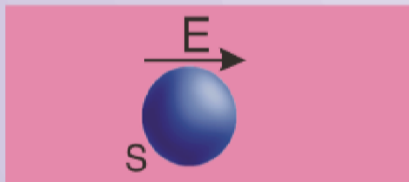
2) 2-D Resistive Barrier  
(Depth < 4s)



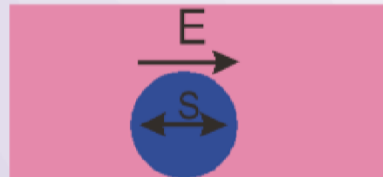
3) Thick Conductive Zone  
(Depth < T/2)



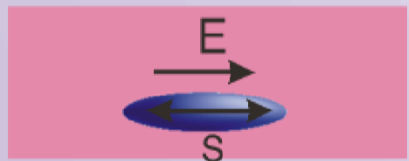
4) 3-D High Contrast Conductor or Resistor  
(Depth < 2s)



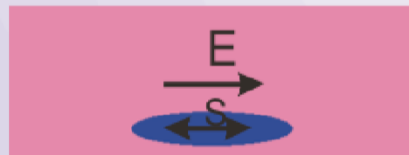
5) 2-D High Contrast Conductor or Resistor  
(Depth < 4s)



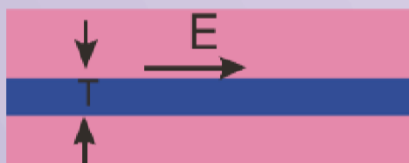
6) 3-D Conductive Lens  
(Horizontal, Depth < 2s)



7) 2-D Conductive Lens  
(Horizontal, Depth < 4s)



8) Thick flat-layer resistivity  
(Depth < 2T)



9) Vertical Conductive Lens  
(Depth < 2s)

